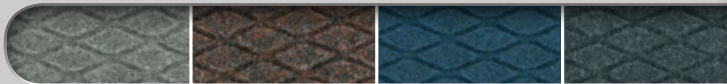




Hog Heaven Fashion
cobalt blue



320 granite

321 cocoa brown

322 cobalt blue

323 coal black

HOG HEAVEN® FASHION

- Anti-static, slip-resistant 100% solution-dyed polypropylene top surface will not fade
- Solution-dyed fabric is molded to a solid Nitrile rubber surface for best durability
- Closed-cell cushion backing is molded to the Nitrile surface, providing a comfortable long-lasting mat with greater border strength
- Beveled border remains flexible for the life of the product and will not crack or curl
- All Hog Heaven® mats are certified slip resistant by the National Floor Safety Institute
- Available in two thicknesses: 5/8" and 7/8"
- Ideal uses include concierge desk, bellman stand, copier station, registration desk and shipping desk



Hog Heaven Plush
brandywine



10 navy spice

11 cinnamon

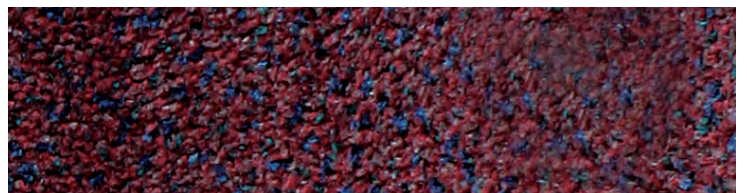
12 confetti grey

13 forest green

14 brandywine

HOG HEAVEN® PLUSH

- Anti-static, slip-resistant 100% solution-dyed nylon top surface will not fade
- Closed-cell cushion backing provides long-lasting comfort without breaking down
- Beveled edges and curved corners create a safer transition from mat to floor
- Designed for maximum worker comfort and striking appearance
- All Hog Heaven® mats are certified slip resistant by the National Floor Safety Institute
- Available in two thicknesses: 5/8" and 7/8"
- Ideal uses include concierge desk, bellman stand, copier station, registration desk and shipping desk



HOG HEAVEN® FASHION

ANTI-FATIGUE/INDOOR



Hog Heaven Fashion
granite

5/8" Product No. 441

Size(ft.)	Size Approx.(in.)				Shipping Wt. (lbs)
2 x 3	24 x 32				7
3 x 5	32 x 58				16
3 x 12	32 x 142				37

SPECIAL SIZES - May be ordered in lengths up to 60'.
Retail Price/Linear Foot (\$). Shipping Wt. for Special Sizes: 5/8" = 1.07 lbs/sq ft.

3' (32") WIDTHS

7/8" Product No. 442

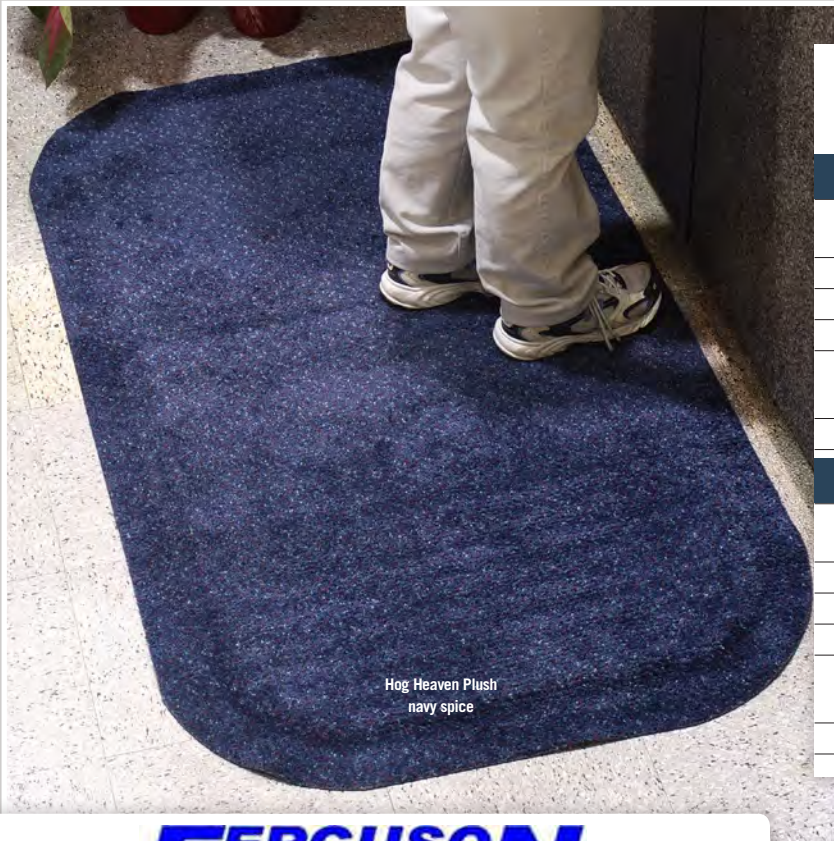
Size(ft.)	Size Approx.(in.)				Shipping Wt. (lbs)
2 x 3	24 x 32				8
3 x 5	32 x 58				17
3 x 12	32 x 142				40

SPECIAL SIZES - May be ordered in lengths up to 60'.
Retail Price/Linear Foot (\$). Shipping Wt. for Special Sizes: 7/8" = 1.15 lbs/sq ft.

3' (32") WIDTHS

HOG HEAVEN® PLUSH

ANTI-FATIGUE/INDOOR



Hog Heaven Plush
navy spice

5/8" Product No. 446

Size(ft.)	Size Approx.(in.)				Shipping Wt. (lbs)
2 x 3	24 x 32				7
3 x 5	32 x 58				16
3 x 12	32 x 142				37

SPECIAL SIZES - May be ordered in lengths up to 60'.
Retail Price/Linear Foot (\$). Shipping Wt. for Special Sizes: 5/8" = 1.07 lbs/sq ft.

3' (32") WIDTHS

7/8" Product No. 447

Size(ft.)	Size Approx.(in.)				Shipping Wt. (lbs)
2 x 3	24 x 32				8
3 x 5	32 x 58				17
3 x 12	32 x 142				40

SPECIAL SIZES - May be ordered in lengths up to 60'.
Retail Price/Linear Foot (\$). Shipping Wt. for Special Sizes: 7/8" = 1.15 lbs/sq ft.

3' (32") WIDTHS

FERGUSON
CLEANING SUPPLIES

FergusonCleaningSupplies.com

BuyFcs.com

303-288-7070