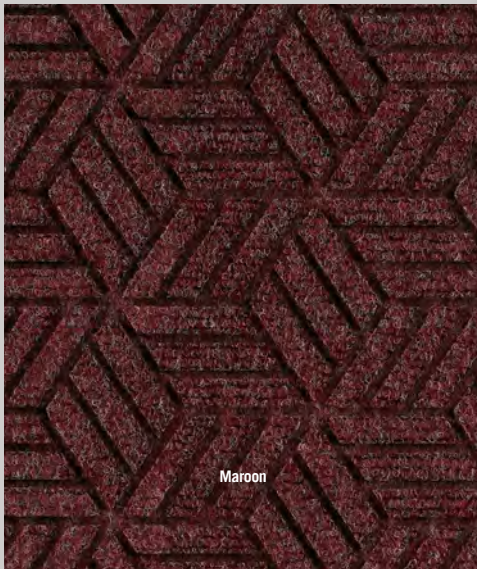


Legacy Eco Grand Mats

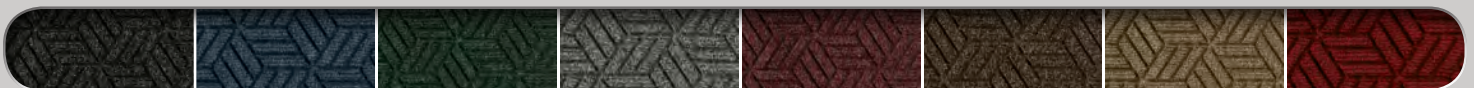
Entrance / Scraper-Wiper / Indoor-Outdoor



Maroon

Legacy Eco Grand mats feature a beautiful half oval mat that can be placed at either or both ends of the standard Legacy Eco mat to create an attractive and “grand” entrance to your facility while also being eco-friendly.

- **Clean & Dry** - Raised nubs remove dirt and moisture from shoes and trap it below foot level; water dam border holds up to 1.5 gallons of water per square yard, keeping your floors clean, dry, and safe
- **Eco-Friendly** - PET fabric is made from 100% post-consumer recycled plastic from drink bottles, and SBR rubber backing contains 20% recycled rubber from car tires
- **Safe** - Beveled edges provide a safe transition from floor to mat
- **Durable** – Reinforced rubber nubs prevent pile from crushing and extend the performance life of the mat
- **Fade & Stain Resistant** - Solution-dyed PET fabric is resistant to staining, dries quickly, and will not fade or rot
- Available in 8 colors; feature 78-mil SBR rubber with cleated backing for placement on carpet or smooth backing for placement on hard floor surface



170 Black Smoke

171 Indigo

172 Southern Pine

173 Grey Ash

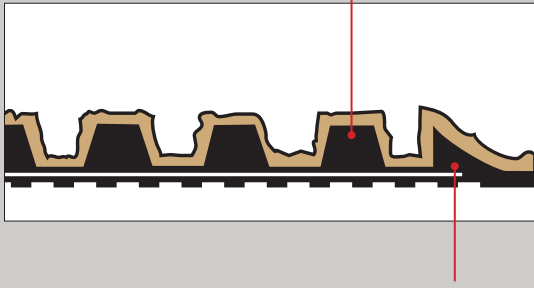
174 Maroon

175 Chestnut Brown

176 Khaki

177 Regal Red

Rubber Reinforced Textile



Fabric Border

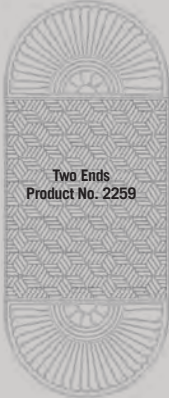


One End
Khaki

Legacy Eco Grand Mats

Entrance / Scraper-Wiper / Indoor-Outdoor

Two Ends		Product No. 2259
Size (ft.)	Size (in.)	Shipping Weight
3' x 7'	34.5" x 85"	18 lbs.
3' x 8.1'	34.5" x 97.25"	20 lbs.
3' x 11.3'	34.5" x 136.25"	28 lbs.
3' x 12.9'	34.5" x 155.25"	31 lbs.
3' x 15.2'	34.5" x 182.5"	37 lbs.
3' x 19'	34.5" x 228.75"	45 lbs.
3' x 22.9'	34.5" x 274.75"	54 lbs.
4' x 7.9'	44.5" x 95.25"	25 lbs.
4' x 10'	44.5" x 120"	32 lbs.
4' x 12.3'	44.5" x 147.5"	39 lbs.
4' x 13.8'	44.5" x 166"	43 lbs.
4' x 16.1'	44.5" x 193.5"	50 lbs.
4' x 19.9'	44.5" x 239.5"	61 lbs.
4' x 23.8'	44.5" x 286"	73 lbs.
6' x 10'	69.5" x 120.75"	47 lbs.
6' x 14.4'	69.5" x 173"	67 lbs.
6' x 15.9'	69.5" x 191.5"	74 lbs.
6' x 18.2'	69.5" x 219.25"	84 lbs.
6' x 22.1'	69.5" x 265.25"	102 lbs.



Half Oval		Product No. 2257
Size (ft.)	Size (in.)	Shipping Weight
3' x 1.8'	34.75" x 21.63"	8 lbs.
4' x 2.3'	44.65" x 27.25"	10 lbs.
6' x 3.3'	70.50" x 40"	18 lbs.



One End		Product No. 2258
Size (ft.)	Size (in.)	Shipping Weight
3' x 5.4'	34.5" x 65.25"	14 lbs.
3' x 6.4'	34.5" x 77.5"	16 lbs.
3' x 9.7'	34.5" x 116.5"	24 lbs.
3' x 11.2'	34.5" x 135.5"	27 lbs.
3' x 13.5'	34.5" x 162.75"	33 lbs.
3' x 17.4'	34.5" x 209"	42 lbs.
3' x 21.2'	34.5" x 255"	50 lbs.
4' x 5.8'	44.5" x 70"	19 lbs.
4' x 7.8'	44.5" x 94.75"	25 lbs.
4' x 10.1'	44.5" x 122.25"	32 lbs.
4' x 11.7'	44.5" x 140.5"	37 lbs.
4' x 14'	44.5" x 168.25"	44 lbs.
4' x 17.8'	44.5" x 214.5"	55 lbs.
4' x 21.7'	44.5" x 260.5"	67 lbs.
6' x 6.8'	69.5" x 82.75"	34 lbs.
6' x 11.2'	69.5" x 135"	52 lbs.
6' x 12.7'	69.5" x 153.5"	59 lbs.
6' x 15.1'	69.5" x 181.25"	70 lbs.
6' x 18.9'	69.5" x 219.25"	87 lbs.
6' x 22.7'	69.5" x 273.5"	104 lbs.



FERGUSON
CLEANING SUPPLIES

FergusonCleaningSupplies.com

BuyFcs.com

303-288-7070