

Waterhog Eco Elite  
maroon

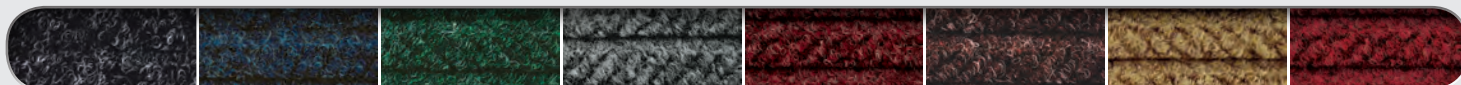


ENTRANCE/SCRAPER-WIPER/INDOOR-OUTDOOR

## WATERHOG™ ECO ELITE & WATERHOG™ ECO ELITE FASHION



- Earth friendly 30 oz/sq yd 100% post consumer recycled PET fabric reclaimed from plastic drink bottles
- SBR rubber backing contains 20% recycled rubber from car tires
- Bi-level surface effectively removes and stores dirt and moisture beneath shoe level until cleaning
- Rubber reinforced face nubs prevent pile from crushing, extending the performance life of the product
- Unique "Water Dam" allows the Waterhog mat to hold up to 1½ gallons of water per square yard; water and dirt stay on the mat
- Anti-Static and certified slip resistant by National Floor Safety Institute
- Available with cleated backing for placement on carpet, smooth backing for hard floor surfaces or Anchor Safe backing\* for maximum movement control on hard surfaces
- Recommended for commercial buildings, hotels, restaurants, healthcare facilities, office buildings and more



170 black smoke

171 indigo

172 southern pine

173 grey ash

174 maroon

175 chestnut brown

176 khaki

177 regal red

**FERGUSON**  
CLEANING SUPPLIES  
Cleaning Supplies That Work & People Who Care

FergusonCleaningSupplies.com  
BuyFcs.com  
303-288-7070

**MADE  
IN THE  
USA**

ENTRANCE/SCRAPER-WIPER/INDOOR-OUTDOOR



Waterhog Eco Elite  
indigo

Waterhog Eco Elite

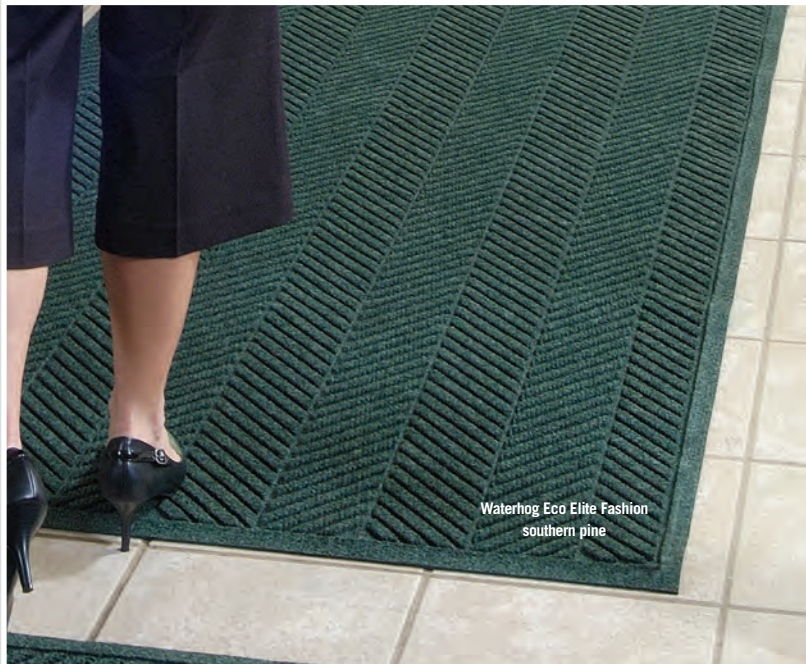


Rubber reinforced textile Rubber border

Waterhog Eco Elite Fashion



Rubber reinforced textile Fabric Border



Waterhog Eco Elite Fashion  
southern pine

WATERHOG™ ECO ELITE

Product No. 2240

Size	Size Approx. in.			Shipping Wt. (lbs)
2' x 3'	24 x 35			6
3 x 4	35 x 46			10
3 x 5	35 x 59			12
3 x 8.4	35 x 101			20
3 x 10	35 x 118			23
3 x 12.2	35 x 147			29
3 x 16	35 x 193			38
3 x 20	35 x 239			46
4 x 6	45 x 70			18
4 x 8.4	45 x 101			26
4 x 10	45 x 118			30
4 x 12.2	45 x 147			37
4 x 16	45 x 193			48
4 x 20	45 x 239			59
6 x 6	71 x 71			28
6 x 8.4	71 x 101			40
6 x 12.2	71 x 147			58
6 x 16	71 x 193			75
6 x 20	71 x 239			93

Special sizes may be ordered in lengths up to 60' available in whole foot increments only.

3' (35") Widths      4' (45") Widths      6' (71") Widths

Mats up to 40' are standard Cleated Backing and available in Smooth Back and Anchor Safe Backing\* on request. Mats over 40' are available only in Smooth Back.

\*Note: Anchor Safe Backing available with a 30% upcharge.

This backing is .100 mil thick Nitrile rubber. Shipping weight is 1 lb per sq ft.

WATERHOG™ ECO ELITE FASHION

Product No. 2241

Size	Size Approx. in.			Shipping Wt. (lbs)
2' x 3'	24 x 35			6
3 x 4	35 x 46			10
3 x 5	35 x 59			12
3 x 8.4	35 x 101			20
3 x 10	35 x 118			23
3 x 12.2	35 x 147			29
3 x 16	35 x 193			38
3 x 20	35 x 239			46
4 x 6	45 x 70			18
4 x 8.4	45 x 101			26
4 x 10	45 x 118			30
4 x 12.2	45 x 147			37
4 x 16	45 x 193			48
4 x 20	45 x 239			59
6 x 6	71 x 71			28
6 x 8.4	71 x 101			40
6 x 12.2	71 x 147			58
6 x 16	71 x 193			75
6 x 20	71 x 239			93

Special sizes may be ordered in lengths up to 60' available in whole foot increments only.

3' (35") Widths      4' (45") Widths      6' (71") Widths

Mats up to 40' are standard Cleated Backing and available in Smooth Back and Anchor Safe Backing\* on request. Mats over 40' are available only in Smooth Back.

\*Note: Anchor Safe Backing available with a 30% upcharge.

This backing is .100 mil thick Nitrile rubber. Shipping weight is 1 lb per sq ft.