



Half Oval
bordeaux



Two Ends
evergreen



One End
medium grey



ENTRANCE/SCRAPER-WIPER/INDOOR-OUTDOOR

WATERHOG™ GRAND CLASSIC



- 100% 24 oz./yd. Polypropylene fiber system dries quickly and won't fade or rot
- Exclusive rubber-reinforced face pattern prevents pile from crushing, extending performance life
- 3/8" thick unique ridged construction effectively removes and holds dirt & moisture below shoe level
- Exclusive "Water Dam" border allows Waterhog to trap dirt and water
- Waterhog Grand Classic has a diamond pattern and comes with a designer fabric border
- Certified slip-resistant by the National Floor Safety Institute
- Available with cleated backing for placement on carpet, smooth backing for hard floor surfaces or Anchor Safe backing* for maximum movement control on hard surfaces
- Recommended for commercial buildings, hotels, restaurants, healthcare facilities, office buildings and more



150 camel 151 medium brown 152 dark brown 153 light green* 154 charcoal 155 red/black 156 medium blue 157 medium grey 158 bluestone 159 evergreen



160 bordeaux 161 navy 162 white* 163 aquamarine* 164 gold* 165 solid red* 166 yellow* 167 orange* 168 purple*



FergusonCleaningSupplies.com
BuyFcs.com
303-288-7070



*These colors are ONLY available in 3' and 4' widths.

WATERHOG™ GRAND CLASSIC

Two Ends

Product No. 274

Size	Size Approx. in.				Shipping Wt. (lbs)
3' x 7.1'	34.75 x 85.25				15
3 x 11.7	34.75 x 138.75				24
3 x 15.5	34.75 x 186.25				32
3 x 19.4	34.75 x 232.25				54
3 x 23.2	34.75 x 275.25				46
4 x 8	44.65 x 96				21
4 x 12.6	44.65 x 149.75				33
4 x 16.5	44.65 x 195.25				42
4 x 20.3	44.65 x 240.25				52
6 x 10.1	70.50 x 121.6				41
6 x 14.8	70.50 x 177				60
6 x 18.6	70.50 x 223				75
6 x 22.4	70.50 x 269				91
Special sizes listed below are for ALL quantities.					
3' x 26.6'	34.75 x 320				54
3 x 30.4	34.75 x 365				61
3 x 34.2	34.75 x 410				68
3 x 38	34.75 x 456				76
3 x 41.7	34.75 x 501				83
3 x 45.5	34.75 x 546				76
3 x 49.3	34.75 x 592				98
3 x 53	34.75 x 637				106
3 x 56.8	34.75 x 682				113
3 x 60.6	34.75 x 727				120
3 x 64.4	34.75 x 773				128
4 x 23.8	44.65 x 285				67
4 x 27.5	44.65 x 331				71
4 x 31.3	44.65 x 376				80
4 x 35	44.65 x 421				90
4 x 38.9	44.65 x 467				99
4 x 42.7	44.65 x 512				109
4 x 46.4	44.65 x 557				118
4 x 50.2	44.65 x 602				128
4 x 54	44.65 x 648				138
4 x 57.7	44.65 x 693				147
4 x 61.5	44.65 x 739				157
6 x 26	70.50 x 312.10				105
6 x 29.7	70.50 x 357.50				120
6 x 33.5	70.50 x 402.75				125
6 x 37.3	70.50 x 448.25				150
6 x 41	70.50 x 493.75				165
6 x 44.8	70.50 x 539.25				181
6 x 48.6	70.50 x 584.50				196
6 x 52.4	70.50 x 630.10				211
6 x 56	70.50 x 675.50				226
6 x 60	70.50 x 721.00				241
6 x 63.7	70.50 x 766.25				256
6 x 67.5	70.50 x 811.75				271

Mats up to 40' are standard Cleated Backing and available in Smooth Back and Anchor Safe Backing* on request. Mats over 40' are available only in Smooth Back.
 *Note: Anchor Safe Backing available with a 30% upcharge.
 This backing is .100 mil thick Nitrile rubber. Shipping weight is 1 lb per sq ft.

ENTRANCE/SCRAPER-WIPER/INDOOR-OUTDOOR

Half Oval

Product No. 272

Size	Size Approx. in.				Shipping Wt. (lbs)
3' x 1.8'	34.75 x 21.63				5
4 x 2.3	44.65 x 27.25				7
6 x 3.3	70.50 x 40				14

One End

Product No. 273

Size	Size Approx. in.				Shipping Wt. (lbs)
3' x 5.5'	34.75 x 65.6				12
3 x 10	34.75 x 113.6				20
3 x 13.9	34.75 x 166.6				28
3 x 17.7	34.75 x 212.6				36
3 x 21.6	34.75 x 258.6				43
4 x 5.9	44.65 x 70.88				16
4 x 10.5	44.65 x 119.25				26
4 x 14.4	44.65 x 172.25				37
4 x 18.2	44.65 x 218.25				47
4 x 22	44.65 x 264.25				57
6 x 7	70.50 x 83.63				28
6 x 11.6	70.50 x 139				47
6 x 15.4	70.50 x 185				63
6 x 19.3	70.50 x 231				78
6 x 23.1	70.50 x 277				93

Special sizes listed below are for ALL quantities.

3' x 25'	34.75 x 300				50
3 x 28.8	34.75 x 345.5				58
3 x 32.5	34.75 x 391				65
3 x 36.3	34.75 x 436				73
3 x 40	34.75 x 481				80
3 x 44	34.75 x 526				87
3 x 47.7	34.75 x 572				95
3 x 51.5	34.75 x 617				102
3 x 55.2	34.75 x 662				110
3 x 59	34.75 x 708				117
3 x 62.8	34.75 x 753				125
4 x 25.4	44.65 x 305				63
4 x 29.2	44.65 x 351				75
4 x 33	44.65 x 396				85
4 x 36.8	44.65 x 441				94
4 x 40.5	44.65 x 487				104
4 x 44.3	44.65 x 532				113
4 x 48	44.65 x 577				123
4 x 52	44.65 x 623				132
4 x 55.6	44.65 x 668				142
4 x 59.4	44.65 x 713				151
4 x 63.2	44.65 x 758				161
6 x 26.5	70.50 x 318				107
6 x 30.3	70.50 x 363				122
6 x 34	70.50 x 409				137
6 x 37.8	70.50 x 454				152
6 x 41.6	70.50 x 499				167
6 x 45.4	70.50 x 545				182
6 x 49	70.50 x 590				197
6 x 52.9	70.50 x 635				212
6 x 56.7	70.50 x 681				228
6 x 60.5	70.50 x 726				243
6 x 64.3	70.50 x 771				258

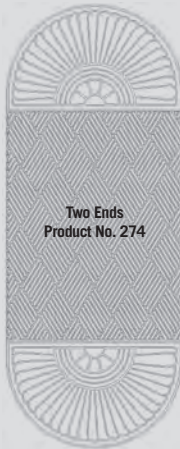
Mats up to 40' are standard Cleated Backing and available in Smooth Back and Anchor Safe Backing* on request. Mats over 40' are available only in Smooth Back.
 *Note: Anchor Safe Backing available with a 30% upcharge.
 This backing is .100 mil thick Nitrile rubber. Shipping weight is 1 lb per sq ft.



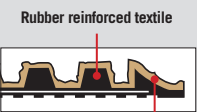
Half Oval
Product No. 272



One End
Product No. 273



Two Ends
Product No. 274



Rubber reinforced textile

Fabric Border